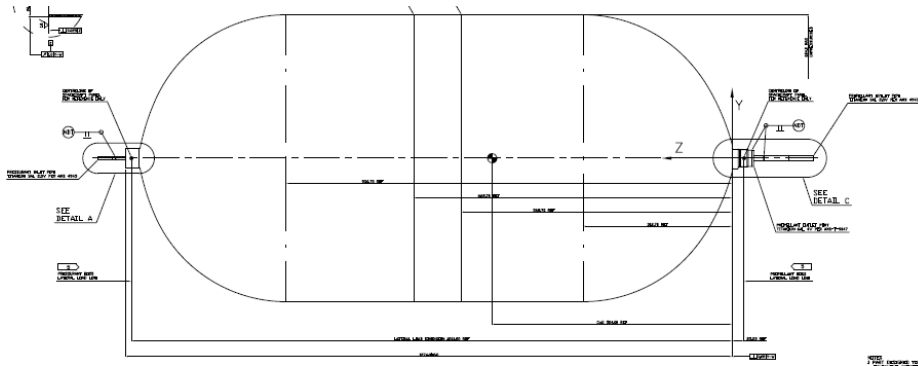


# PTP-288

## Bi-propellant PMD Tank - (Build-to-Print) Airbus Full Design Authority



\* Maximum Expected Operating Pressure

<b>Heritage</b>	Eurostar 2000+ & 3000	
<b>Fluids</b>	MMH, N <sub>2</sub> O <sub>4</sub>	
<b>Pressurant Gas</b>	He	
<b>Propellant Management</b>	PMD	
<b>Materials</b>	<b>Shell</b>	Ti-6Al-4V
	<b>Tube</b>	Ti-3Al-2.5V
	<b>PMD</b>	Ti-6Al-4V
<b>Mounting interface</b>	polar	
<b>Total Volume</b>	288 l	17.575 in <sup>3</sup>
<b>Temperature Range</b>	0 / +50 °C	+32 / +122 °F
<b>Tank Dry Mass</b>	14,46 kg	31,88 lbs
<b>Diameter</b>	604 mm	23,78 in
<b>Length</b>	1.259 mm	94,57 in
<b>MEOP*</b>	20,0 bar	290 psi
<b>Proof pressure (x 1,31)</b>	26,2 bar	380 psi
<b>Burst pressure (x 1,50)</b>	30,0 bar	435 psi
<b>Burst pressure tested (19°C)</b>	40,5 bar	587 psi

