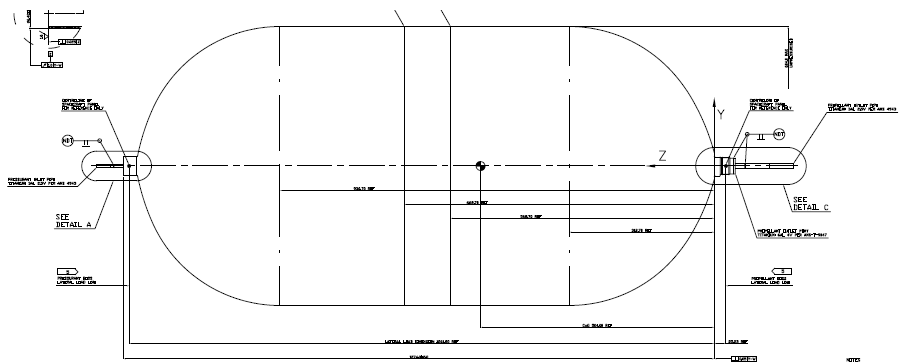


# PTP-393

*Bi-propellant PMD Tank - (Build-to-Print)  
Airbus Full Design Authority*



\* Maximum Expected Operating Pressure

**Heritage** Eurostar 2000+ & 3000

**Fluids** MMH, N<sub>2</sub>O<sub>4</sub>

**Pressurant Gas** He

**Propellant Management** PMD

**Materials** **Shell** Ti-6Al-4V

**Tube** Ti-3Al-2.5V

**PMD** Ti-6Al-4V

**Mounting interface** polar

**Total Volume** 393 l 23.982 in<sup>3</sup>

**Temperature Range** 0 / +50 °C +32 / +122 °F

**Tank Dry Mass** 17 kg 37,48 lbs

**Diameter** 604 mm 23,78 in

**Length** 1.630 mm 64,17 in

**MEOP\*** 20,0 bar 290 psi

**Proof pressure (x 1,31)** 26,2 bar 380 psi

**Burst pressure (x 1,50)** 30,0 bar 435 psi

**Burst pressure tested (19°C)** 40,5 bar 587 psi

