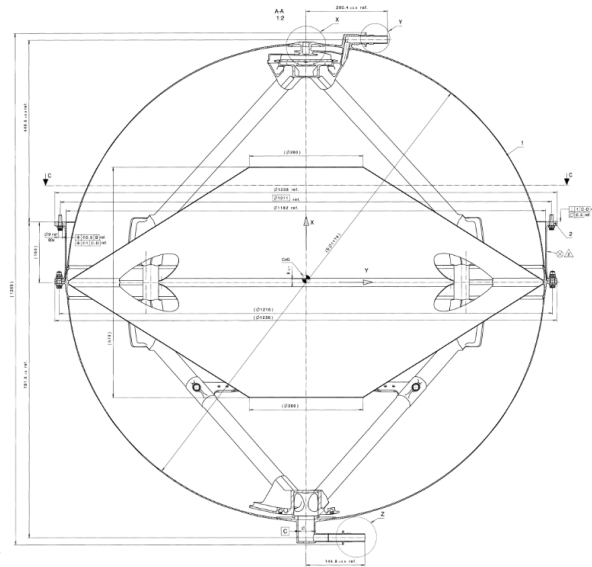


# PTP-847

## Bi-propellant PMD Tank – PMD Airbus Design



<b>Heritage</b>	ATV	
<b>Fluids</b>	MMH, MON	
<b>Pressurant Gas</b>	He	
<b>Propellant Management</b>	PMD	
<b>Materials</b>	<b>Shell</b>	Ti-15-3-3-3
	<b>Tube</b>	Ti-3Al-2.5V
	<b>PMD</b>	Ti-6Al-4V
<b>Mounting interface</b>	equatorial	
<b>Total Volume</b>	847 l	51.687 in <sup>3</sup>
<b>Temperature Range</b>	-20 / + 45°C	-4 / +113 °F
<b>Tank Dry Mass</b>	74,5 kg	164,24 lbs
<b>Diameter</b>	1.174,0 mm	46,22 in
<b>Length</b>	1.174,0 mm	46,22 in
<b>MEOP*</b>	25,0 bar	363 psi
<b>Proof pressure (x 1,25)</b>	31,3 bar	454 psi
<b>Burst pressure (x 1,50)</b>	37,5 bar	544 psi
<b>Burst pressure tested</b>	bar	psi

\* Maximum Expected Operating Pressure

